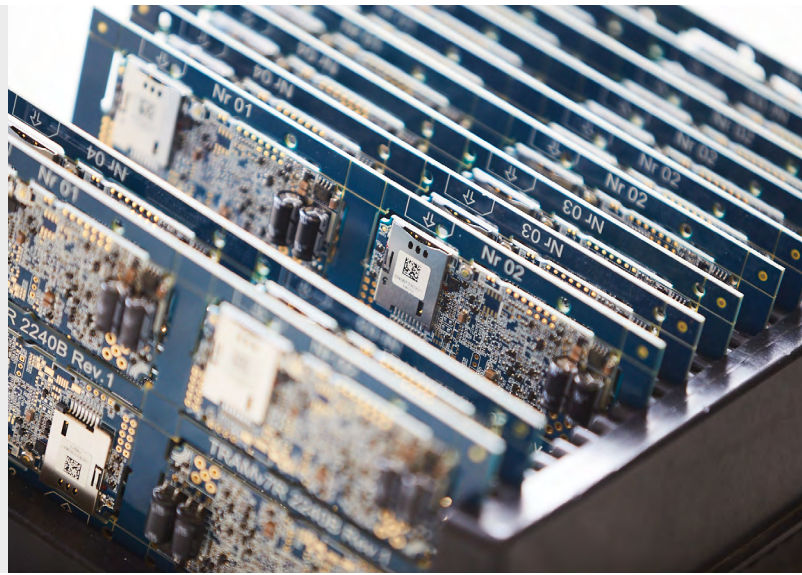




Perfectly positioned for the future

SMT placement that's technologically flexible yet uncompromising in quality



The challenge

Located in Straszyn, Poland, DGTronik is an established provider of electronics manufacturing services. Assembling complex products and prototypes, many of which contain THT as well as highly miniaturized surface mount components, requires state-of-the-art manufacturing technologies. The company's customers – especially those in the public sector – demand maximum precision and absolute adherence to delivery deadlines. To meet these requirements with a steady focus on quality and future viability, DGTronik recently upgraded its SMT production line with two new highly efficient and flexible SIPLACE SX2 placement machines from ASMPT.



“Upgrading our second SMT line with a SIPLACE SX2 placement machine from ASMPT increased its capacity by 60 percent and shortened our deliver times by several weeks.”

DGTronik

Capacity increased by

60
percent

PCB sizes of up to

1,525 × 560 mm

Maximum component flexibility:

0201 (metric) to 200 × 110 × 50 mm

Interchangeable gantries enable

capacity adjustments

in just a few minutes

The solution

Due to its solid long-term relationship with ASMPT, DGTronik decided to upgrade its production line with two [SIPLACE SX2](#) placement machines, whose exceptional flexibility and efficiency make them ideally suited for modern high-speed production. Their three innovative CP20, CPP and TWIN placement heads featuring capacities of 86,500 cph for the CP20 and 27,000 cph for the CPP and TWIN process a broad spectrum of components with maximum precision. The CPP placement head's ability to switch between Pick&Place, Collect&Place and Mixed Modes in response to software commands ensures that the line is always perfectly balanced even during frequent product changeovers with no need for time-consuming head and configuration changes. In addition, SIPLACE SX placement machines feature many feeding options for a huge spectrum of components ranging from tiny SMDs to THT heavyweights and OSCs and supply those components with exceptional reliability. Smaller PCBs measuring up to 450 × 260 mm can be moved through the machines with the powerful dual conveyor, and PCBs measuring up to 1,525 × 560 mm can be processed with the optional smart transport module.

Efficient interchangeability

An outstanding feature of the SIPLACE SX2 is its interchangeable gantry system, with which DGTronik can adapt its machines in only a few minutes, allowing it to expand, reduce or redistribute its production capacities without encountering significant downtimes. This cuts down on bottlenecks and ensures that production resources are always available where they are needed.

Quality and precision

A high-resolution component camera ensures a consistently high level of quality by taking accurate 3D images and reliably detecting flaws like damaged THT pins. In addition, the SIPLACE SX2 checks critical PCB areas for correctly printed solder paste pads as well as for missing or incorrectly positioned components.



With its experienced and highly qualified team, DGTronik produces high-quality modules for many applications and industries on two modern SMT lines.

About DGTronik

DGTronik was founded in 2002 when the production office of DGT was converted into an independent company that is part of the DGT Group. With its experienced team and a solid manufacturing infrastructure, DGTronik was able to successfully execute demanding projects in the field of contract manufacturing from the start. In addition to SMT and THT assembly, the company offers services such as electronic module production, component programming, finished product testing, laser labeling and small-scale mechanics – always with a steady focus on long-term customer relationships and the highest quality standards. DGTronik has 120 employees and is headquartered in Straszyn, Poland. The company manufactures for many international customers, most of whom are in Europe and the USA.

The success story

The two new SIPLACE SX2 placement machines enable DGTronik to process a significantly broader component spectrum, making its production not only much more flexible but also much more productive. Intelligent automation keeps the frequency of manual assists low despite a high level of component diversity, and smart features deliver more efficiency and make the employees' work easier. The new machines have enabled DGTronik to increase the factory capacity by 60 percent in a very short period of time – with significantly shorter delivery times and a consistently high level of quality.

ASMPT

ASMPT GmbH & Co. KG
Rupert-Mayer-Strasse 48 | 81379 Munich | Germany | Phone: +49 89 20800-22000 | Email: smt-solutions.de@asmpt.com

asmpt.com | smt.asmpt.com

Edition 1/08-2024 | All rights reserved. | Order No.: A22-ASMPT-A360-EN | Printed in Germany | © 2024 ASMPT GmbH & Co. KG